

# PERCENT STUDENT STATION UTILIZATION OF OCCUPIED CLASSROOMS AND CLASS LABORATORIES

## TABLE 7

The statistics which reflect percent of student utilization are extremely valuable when planning new facilities. They provide a general guide for the need for various sizes of classrooms and laboratories. The comparison between how well the teaching facilities accommodate the size of the classes being conducted in them is helpful; however, the ratio does not indicate how efficiently the facilities are being used. It must be noted that data in Table 7 only include rooms which are in use (scheduled), and is, therefore, an indication of how the capacity of the room is matched to the number of students in the class.

The percent of student station utilization is derived from the ratio of the total student hours of instruction to the potential student hours of instruction. The total student hours of instruction is defined as the enrollment of the class multiplied by the hours the class meets per day which is then multiplied by the number of days per week the class meets. The potential student hours of instruction is defined as the number of hours that the course meets each week, rounded to the nearest half hour, multiplied by the number of days per week the class meets. This figure is then multiplied by the capacity of the room.

Norm: Classrooms - 60% Student Station Utilization  
Laboratories - 80% Student Station Utilization

$$\text{Percent Student Station Utilization} = \frac{\text{Total Student Hours of Instruction}}{\text{Potential Student Hours of Instruction}}$$

As we continue with the sample data:

ENROLL- MENT	ROOM TYPE	CAPACITY				
33	110	3 days * 1 hour * 33 =	99	50	3 days * 1 hour * 50 =	150
40	110	2 days * 1.5 hr * 40 =	120	50	2 days * 1.5 hr * 50 =	150
46	110	3 days * 1 hour * 46 =	138	50	3 days * 1 hour * 50 =	150
26	110	2 days * 1.5 hr * 26 =	78	50	2 days * 1.5 hr * 50 =	150
52	110	3 days * 1 hour * 52 =	156	50	3 days * 1 hour * 50 =	150
45	110	3 days * 1 hour * 45 =	135	50	3 days * 1 hour * 50 =	150
54	110	2 days * 1.5 hr * 54 =	162	50	2 days * 1.5 hr * 50 =	150
26	110	3 days * 1 hour * 26 =	78	50	3 days * 1 hour * 50 =	150

30	110	3 days * 1 hour * 30 = 90	50	3 days * 1 hour * 50 = 150
39	110	2 days * 1.5 hr * 39 = 117	50	2 days * 1.5 hr * 50 = 150
			-----	-----
		TOTALS	1,173	1,500
17	210	1 day * 3 hrs * 17 = 51	24	1 day * 3 hrs * 24 = 72
14	210	1 day * 3 hrs * 14 = 42	24	1 day * 3 hrs * 24 = 72
25	210	3 days * 1 hour * 25 = 75	40	1 day * 3 hrs * 40 = 120
35	210	3 days * 1 hour * 35 = 105	40	1 day * 3 hrs * 40 = 120
30	210	2 days * 1.5 hr * 30 = 90	40	1 day * 3 hrs * 40 = 120
29	210	1 day * 3 hrs * 29 = 87	40	1 day * 3 hrs * 40 = 120
21	210	1 day * 3 hrs * 21 = 63	40	1 day * 3 hrs * 40 = 120
22	210	1 day * 3 hrs * 22 = 66	40	1 day * 3 hrs * 40 = 120
13	210	1 day * 3 hrs * 13 = 39	24	1 day * 3 hrs * 24 = 72
16	210	1 days * 3 hrs * 16 = 48	24	1 day * 3 hrs * 24 = 72
			-----	-----
		TOTALS	666	1,008

Total Student Hours in Classrooms = 1173  
-----  
Capacity in Classrooms = 1500  
----- = .782 or 78%

Total Student Hours in Class Laboratories = 666  
-----  
Capacity in Class Laboratories = 1008  
----- = .660 or 66%

The report for one institution would look like this:

	FTE	CLASSROOMS	LABORATORIES
Institution	5,411	78.2	66.0

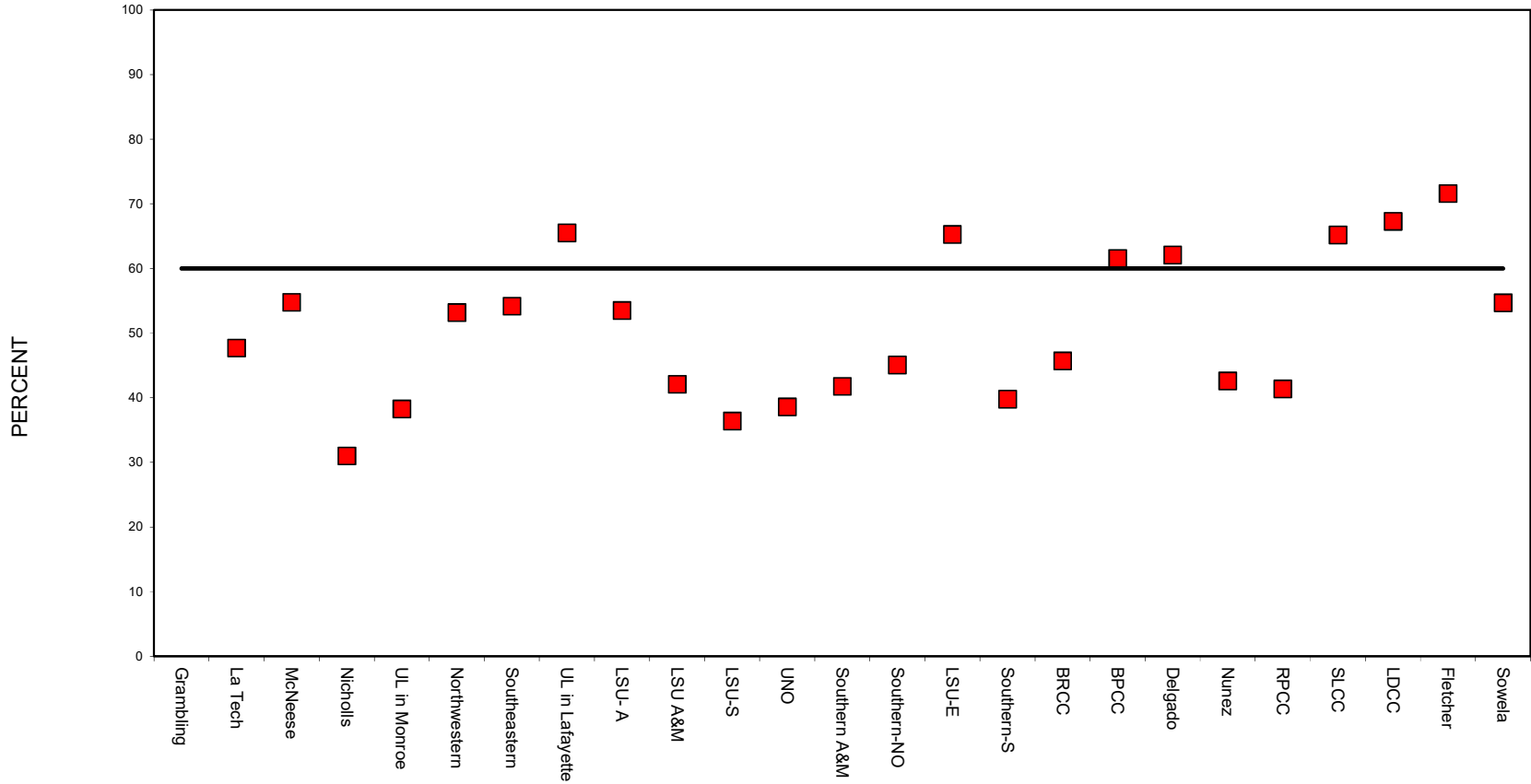
**TABLE 7**  
**PERCENT STUDENT STATION UTILIZATION OF OCCUPIED**  
**CLASSROOMS AND CLASS LABORATORIES**

INSTITUTION	FTE	CLASSROOMS					LABORATORIES				
		2019	2018	2017	2016	2015	2019	2018	2017	2016	2015
<b>PUBLIC FOUR YEAR INSTITUTIONS</b>											
Grambling State University	4,554	47.7	49.0	50.5	53.7	47.2	46.9	43.0	45.7	49.3	33.9
Louisiana Tech University	10,085	54.8	57.5	58.1	60.1	57.2	74.2	70.9	73.2	72.4	71.8
McNeese State University	6,378	31.0	42.7	25.5	26.2	25.6	57.3	62.3	79.5	82.4	48.1
Nicholls State University	5,653	38.3	37.1	38.8	40.0	38.5	63.5	57.3	54.8	52.8	49.6
University of Louisiana in Monroe	7,273	53.2	58.2	58.6	56.9	53.7	78.9	93.7	85.9	84.9	72.4
Northwestern State University	8,308	54.2	53.3	58.4	56.1	54.4	57.3	53.0	52.6	35.5	35.9
Southeastern Louisiana University	11,195	65.5	61.1	60.5	59.9	59.7	41.1	48.2	48.5	53.8	51.6
University of Louisiana in Lafayette	14,140	53.5	53.8	53.7	55.4	56.8	60.4	60.2	60.0	59.7	56.7
LSU at Alexandria	6,259	42.1	42.1	26.2	42.1	27.2	43.8	43.8	39.4	43.8	41.1
LSU A&M (Including Ag. & Law)	2,397	36.4	27.2	38.1	27.5	40.1	37.7	39.4	45.5	42.8	58.6
LSU in Shreveport	29,177	38.6	39.1	38.5	39.2	46.2	46.8	48.0	53.3	50.0	63.4
University of New Orleans	5,000	41.8	38.8	42.1	39.8	42.2	63.4	50.0	43.8	51.1	43.8
Southern University A&M(Including Law)	6,614	45.1	45.9	48.4	48.6	49.2	38.1	41.6	35.7	35.1	37.2
Southern University at New Orleans	1,804	65.3	63.4	63.4	64.1	75.6	71.9	68.0	68.0	63.2	71.8
<b>PUBLIC TWO YEAR INSTITUTIONS</b>											
LSU at Eunice	2,033	39.8	44.8	43.0	44.1	29.3	69.3	66.4	66.3	63.6	53.7
Southern University at Shreveport	2,067	45.7	39.7	38.4	42.6	48.4	45.5	38.1	53.4	62.2	57.5
Baton Rouge Community College	5,213	61.6	65.2	68.8	63.8	78.4	43.2	43.7	50.4	37.1	80.3
Bossier Parish Community College	4,200	62.1	66.4	66.3	55.5	57.1	57.8	69.7	67.4	59.7	60.0
Delgado Community College	8,567	42.6	43.8	42.4	43.8	47.1	66.0	66.1	69.1	71.5	77.5
Nunez Community College	1,354	41.4	45.1	55.3	41.6	44.4	57.2	44.5	80.9	18.0	0.0
River Parishes Community College	1,111	65.2	72.9	69.9	57.3	67.8	43.7	33.7	36.6	44.0	61.5
South Louisiana Community College	3,346	67.3	66.6	80.4	78.3	83.8	58.7	68.1	82.1	82.0	85.2
Acadian	89	57.0	50.3	64.6	0.0	49.1	42.8	63.7	65.1	53.8	59.2
Charles B. Coreil	64	22.0	21.5	37.6	24.2	65.4	0.0	60.0	90.0	0.0	55.1
Evangeline	95	40.3	53.3	35.2	41.2	0.0	0.0	54.6	0.0	0.0	79.1
Gulf Area	178	66.5	75.3	104.0	33.9	55.9	57.4	76.9	74.6	59.5	100.2
Lafayette	419	86.4	79.0	74.6	0.0	75.5	76.8	73.0	69.9	218.1	81.4
T. H. Harris	276	76.1	66.8	66.8	76.5	71.1	69.5	61.1	63.7	60.2	80.0
Young Memorial	138	67.5	50.5	28.5	37.8	38.7	10.3	5.9	11.7	8.9	5.4
Louisiana Delta Community College	1,614	71.6	72.5	71.5	71.5	64.1	44.0	44.0	27.0	27.0	49.4
Bastrop	127	41.7	40.6	87.8	87.8	56.8	21.6	21.6	29.9	29.9	10.8

Delta Ouachita	496	42.3	42.3	91.3	91.3	71.0	16.3	16.3	18.8	18.8	11.6
Northeast	262	42.3	42.1	36.4	64.7	48.2	4.8	4.8	5.7	15.1	7.3
Ruston	212	80.1	85.7	53.6	53.6	112.5	24.0	23.6	43.9	43.9	38.7
Tallulah	135	80.7	71.6	76.0	76.0	54.3	26.4	26.4	16.9	16.9	14.3
L. E. Fletcher Tech Community College	1,468	54.7	62.4	34.2	36.0	27.0	22.8	19.1	41.7	46.8	29.7
Sowela Technical Community College	2,477	52.4	44.1	46.4	49.7	46.8	47.3	46.8	59.7	56.2	54.0
Central LA Technical College											
Alexandria	490	42.3	24.7	19.6	49.0	29.3	36.1	28.8	25.0	23.9	25.0
Avoyelles	186	57.3	59.8	66.7	69.1	51.0	62.6	44.8	45.1	60.0	41.2
Huey P. Long	223	0.0	0.0	0.0	0.0	0.0	15.8	15.9	15.8	27.1	11.7
Lamar Salter	173	35.6	41.1	37.0	50.7	25.2	12.2	25.1	14.7	21.9	28.2
Shelby Jackson	124	48.0	48.8	45.4	43.4	40.4	0.0	0.0	0.0	0.0	0.0
Northwest LA Technical College											
Mansfield	135	52.1	38.3	52.9	53.4	35.8	23.9	21.9	22.0	28.9	15.4
Natchitoches	218	27.5	31.0	34.9	33.5	32.9	20.8	25.9	28.5	33.5	24.1
Northwest	299	50.2	59.0	48.8	58.7	45.6	22.0	27.5	30.0	21.5	30.4
Sabine Valley	118	36.1	54.7	54.7	47.6	25.5	0.0	0.0	0.0	21.3	0.0
Shreveport Bossier	301	26.8	29.0	26.5	27.1	30.2	23.6	20.6	8.2	30.0	14.9
Northshore Technical Community College											
Sullivan	1,111	56.2	53.9	51.7	56.3	47.3	30.6	28.2	25.0	45.2	32.7

\*DOES NOT INCLUDE SATURDAY CLASSES

PERCENT STUDENT STATION UTILIZATION OF OCCUPIED CLASSROOMS (TABLE 7) 2019



### PERCENT STUDENT STATION UTILIZATION OF OCCUPIED CLASS LABS (TABLE 7) 2019

