

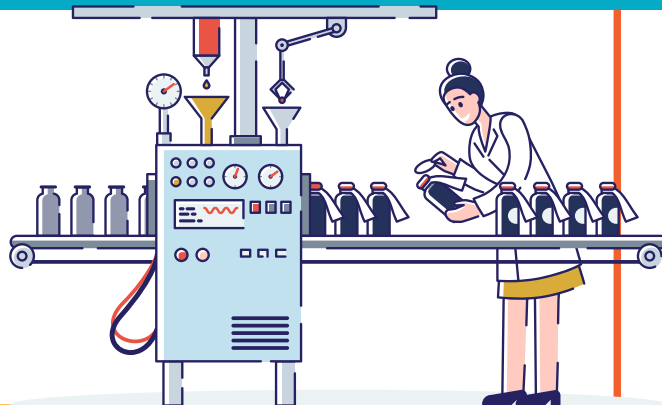


# CHEMICAL ENGINEERING

## GENERAL INFORMATION

Are you interested in designing and building innovative solutions to complex problems? If so, an engineering degree might be the perfect pathway for you. The field of engineering covers a wide range of disciplines, including electrical, mechanical, civil, and aerospace engineering, to name a few.

With a strong emphasis on practical skills and problem-solving, an engineering degree equips you with the knowledge and expertise to tackle real-world challenges and contribute to technological advancements. Whether it's developing sustainable infrastructure, designing cutting-edge technologies, or exploring new frontiers in space exploration, engineering offers endless opportunities for creativity, impact, and personal growth.



## SKILLS YOU'LL DEVELOP

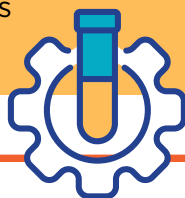
- Design skills
- Analytical thinking
- Attention to detail
- Software competency

## POTENTIAL CAREERS

- Process Engineer
- Environmental Engineer
- Process Safety Engineer
- Food engineer
- Analytical chemist
- Pharmaceutical manufacturer

## Transfer pathways start at a Louisiana community college.

- Complete the first 60 credits on your transfer pathway at a community college
- Earn your associate degree
- Apply to a public Louisiana university that offers a bachelor's degree in Chemical Engineering
- Transfer in with a guarantee that all 60 credits will apply to your bachelor's degree



Chemical Engineering

Earn an associate degree on your way to transfer

*your*

# FIRST 60 CREDITS IN CHEMICAL ENGINEERING

Subject	Required Courses
Math	College Algebra Calculus I Calculus II Calculus III
Natural Sciences	Life Science General Chemistry + Lab Physics I and II for Engineering & Science
English	Composition 1 Composition 2
Humanities	Nine credits of humanities*
Engineering	Organic Chemistry I Organic Chemistry II
Social/Behavioral Science	Six credits of social/behavioral science*
Fine Arts	Three credits of fine arts*

\*Each student may select their preferred courses in these elective areas.



## FINISH THE CHEMICAL ENGINEERING PATHWAY AT THESE

# INSTITUTIONS

- Grambling State University
- Louisiana State University
- Louisiana Tech University
- McNeese State University
- Nicholls State University
- Northwestern State University
- Southeastern Louisiana University
- Southern University and A+M College
- University of Louisiana at Lafayette
- University of New Orleans

