



COMMUNICATION

GENERAL INFORMATION

A Communication degree is an excellent choice for students interested in exploring the dynamic field of human communication. Communication offers a wide range of career opportunities, including specialization in mass communication, public relations, marketing, and TV and film production.

As a communication professional, you will create content for various platforms, such as websites, social media, print publications, and press releases, with the ultimate goal of informing, inspiring, and motivating your audience. With an associate degree in communication, you can pursue careers such as a public relations manager, digital media specialist, or writer for a television show. This degree is also transferable to universities offering a bachelor's degree in communication.



SKILLS YOU'LL DEVELOP

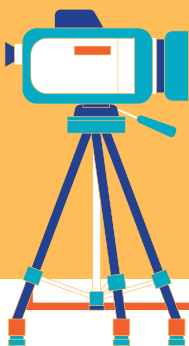
- Effective communication
- Media literacy
- Communication theories
- Critical thinking

POTENTIAL CAREERS

- Publicist
- Media Planner
- Social Media Manager
- Journalist
- Film editor
- Content Editor

Transfer pathways start at a Louisiana community college.

- Complete the first 60 credits on your transfer pathway at a community college
- Earn your associate degree
- Apply to a public Louisiana university that offers a bachelor's degree in Communication
- Transfer in with a guarantee that all 60 credits will apply to your bachelor's degree



Communication

Earn an associate degree on your way to transfer

your

FIRST 60 CREDITS IN COMMUNICATION

Subject	Required Courses
Math	Six credits of math*
Natural Sciences	Nine credits of natural sciences*
English	Composition 1 Composition 2
Humanities	Nine credits of humanities*
Communications	Intro Communications Intro to Mass Media Nine credits of communications*
Social/Behavioral Science	Six credits of social/behavioral science*
Fine Arts	Three credits of fine arts*

*Each student may select their preferred courses in these elective areas.



FINISH THE COMMUNICATION PATHWAY AT THESE

INSTITUTIONS

- Grambling State University
- Louisiana State University
- LSU at Alexandria
- LSU in Shreveport
- Louisiana Tech University
- McNeese State University
- Nicholls State University
- Northwestern State University
- Southeastern Louisiana University
- Southern University + A&M College
- University of Louisiana at Lafayette
- University of Louisiana at Monroe

