



# MECHANICAL ENGINEERING

## GENERAL INFORMATION

Are you interested in designing and building innovative solutions to complex problems? If so, an engineering degree might be the perfect pathway for you. The field of engineering covers a wide range of disciplines, including electrical, mechanical, civil, and aerospace engineering, to name a few. With a strong emphasis on practical skills and problem-solving, an engineering degree equips you with the knowledge and expertise to tackle real-world challenges and contribute to technological advancements. Whether it's developing sustainable infrastructure, designing cutting-edge technologies, or exploring new frontiers in space exploration, engineering offers endless opportunities for creativity, impact, and personal growth.



## SKILLS YOU'LL DEVELOP

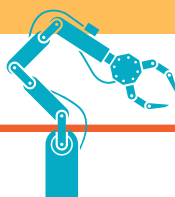
- Mechanical design
- Analytical thinking
- Attention to detail
- Problem-solving skills

## POTENTIAL CAREERS

- Mechanical Engineer
- Robotics Engineer
- HVAC Engineer
- Product Design Engineer
- Product designer
- Quality engineer

## Transfer pathways start at a Louisiana community college.

- Complete the first 60 credits on your transfer pathway at a community college
- Earn your associate degree
- Apply to a public Louisiana university that offers a bachelor's degree in Mechanical Engineering
- Transfer in with a guarantee that all 60 credits will apply to your bachelor's degree



Mechanical Engineering

**Earn an associate degree on your way to transfer**

*your*

# FIRST 60 CREDITS IN MECHANICAL ENGINEERING

| Subject                   | Required Courses  |
|---------------------------|---|
| Math                      | College Algebra<br>Calculus I<br>Calculus II<br>Calculus III                          |
| Natural Sciences          | Life Science<br>General Chemistry + Lab<br>Physics I and II for Engineering & Science |
| English                   | Composition 1<br>Composition 2  |
| Humanities                | Nine credits of humanities*   |
| Engineering               | Statics<br>Dynamics<br>Material Science   |
| Social/Behavioral Science | Six credits of social/behavioral science*   |
| Fine Arts                 | Three credits of fine arts*   |
| Math                      | College Algebra<br>Calculus I<br>Calculus II<br>Calculus III                          |

\*Each student may select their preferred courses in these elective areas.

*did you know?*

You can earn credit for a course through accelerated programs, like:

- Dual enrollment
- Advanced Placement
- International Baccalaureate
- Prior Learning Assessments
- College Level Examination Program

*talk to an advisor*



## FINISH THE MECHANICAL ENGINEERING PATHWAY AT THESE

# INSTITUTIONS

- Grambling State University
- Louisiana State University
- Louisiana Tech University
- McNeese State University
- Nicholls State University
- Northwestern State University
- Southeastern Louisiana University
- Southern University and A+M College
- University of Louisiana at Lafayette
- University of New Orleans

