

2024 YEAR FIVE REVIEW



MEAUXMENTOUS MILESTONE

Louisiana Board of Regents Master Plan Update



**ATTAINMENT
GOAL**

60%
of Louisiana's Working-Age
Adults with a Postsecondary
Credential by 2030

Year Five Review

Five years ago, the Louisiana Board of Regents adopted *Louisiana Prospers*, its Master Plan for Higher Education, setting an audacious goal to support economic growth and strengthen quality of life in our state by increasing the percentage of Louisiana's working-age population (ages 25-64) with a credential of value beyond high school to 60% by 2030. This goal not only represents an ambitious target, but also provides a roadmap to a future in which all of Louisiana's residents can prosper, in both their work and lives.

At this half-way point, it is important to measure progress and assess the effectiveness of our strategies. **We remain committed to this vision because education provides a clear pathway to employment and an essential route out of poverty. It is a proven strategy to secure a healthier, wealthier and safer Louisiana for all her residents.**

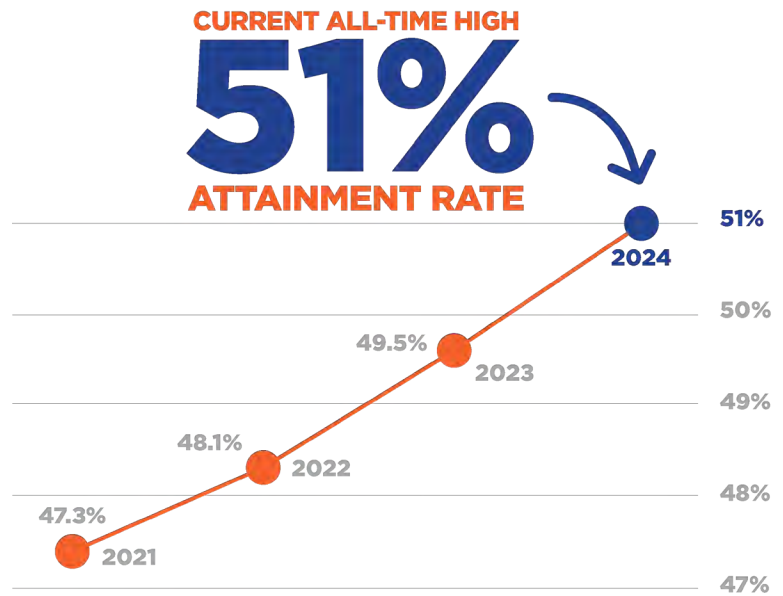
Fueled by previous years of record funding, our approach to achieving the 2030 attainment goal has been three-fold: first, to introduce a coordinated set of strategies that widen educational pathways, enabling more people to begin or resume pursuing their higher education aspirations; second, to implement a new comprehensive approach to ensuring student success; and third, to broaden the tent, recognizing and counting all postsecondary education degrees and credentials of value.

Our bookend approach of widening the path to college for both adults and high school students is beginning to pay dividends. The M.J. Foster Promise scholarship, Louisiana's adult financial aid program, has helped raise the participation of adults in higher education to record levels. The expansion of dual enrollment offerings and strong college outreach along with a first-in-the-nation FASFA completion rate have reversed the pandemic-era decline, increasing college access and success for traditional students. **Our statewide focus on improved student outcomes through adoption of Louisiana's Meauxmentum Approach, as well as statewide developmental education reform, is working, yielding an almost five-fold increase in math passage rates.** And we are now counting and valuing the full range of credentials produced in our state, from traditional associate's, baccalaureate and graduate degrees to technical diplomas and short-term industry-based certifications, as part of

our progress towards 2030. We look to create a boom of new employees, earning higher wages, supporting their communities, and spurring greater economic growth across Louisiana.

WHERE ARE WE NOW?

Over the last five years, our pursuit of the *Louisiana Prospers* goal has resulted in the state’s educational attainment level reaching its current all-time high of 51% in 2024, more than a full percentage point higher than last year. **Each percentage point increase in educational attainment in Louisiana means that more than 23,000 additional people have completed a degree or high-value credential — a number greater than the population of Ruston, Chalmette, or Hammond.**



RETURN ON INVESTMENT

► TO THE STUDENTS

Regardless of their area of study or credential level, at every stage of their careers, postsecondary graduates will earn significantly higher salaries than high school graduates. **Individually, this year’s graduates will earn an additional \$946,000 per person on average over their lifetime; collectively the increased earnings will total approximately \$70 billion more across their careers.** A higher salary provides each graduate and their family with a higher quality of life and a more resilient future.

Educational attainment beyond high school is strongly connected with positive impacts on almost every facet of a graduate’s life and the vibrancy of their community, including health, prosperity and civic engagement. For instance, compared with individuals whose highest credential is a high school diploma, bachelor’s degree holders are 24% more likely to be employed, 3.5 times less likely to be impoverished (College Board), and five times less likely to be incarcerated (Lumina Foundation). They are 39% more likely to say that they are in good health (Lumina Foundation) and enjoy a life expectancy that is five to six years longer on average (Brookings Institute).

► TO THE STATE

Increased attainment also provides a range of financial benefits to Louisiana including an increased number of taxpayers, decreased social services, and stronger workforce participation. Reaching our 2030 goal will mean 195,000 more people with credentials than Louisiana has today. They will generate approximately \$12 billion more in income and sales tax revenue for the state, and the purchases made by these graduates will bring an added \$127 billion to businesses. Moreover, the significant reduction in the likelihood of being impoverished means that graduates are substantially less likely to need public assistance or healthcare provided by Medicaid. The decline in the likelihood of incarceration across postsecondary graduates’ lives will save the state more than \$100 million for each graduating class across their lifetime (Lumina Foundation).

WORKFORCE ALIGNMENT

During 2023, of the more than 255,000 unique job postings for full-time positions in Louisiana that specified educational qualifications, more than half required at least an associate's degree and 18% more preferred a candidate with an industry-based certification.

That's why we look not only to increase educational attainment but also to tighten credential programs' alignment to the workforce. The Louisiana Workforce Commission has a well-established methodology that ranks jobs on a five-star scale, with the highest levels awarded to occupations that are in greatest demand, provide a good salary and drive future economic growth. **Graduates from Louisiana's public universities and colleges fill these jobs today, with more than 80% currently working in Louisiana employed in a three-, four- or five-star job.**

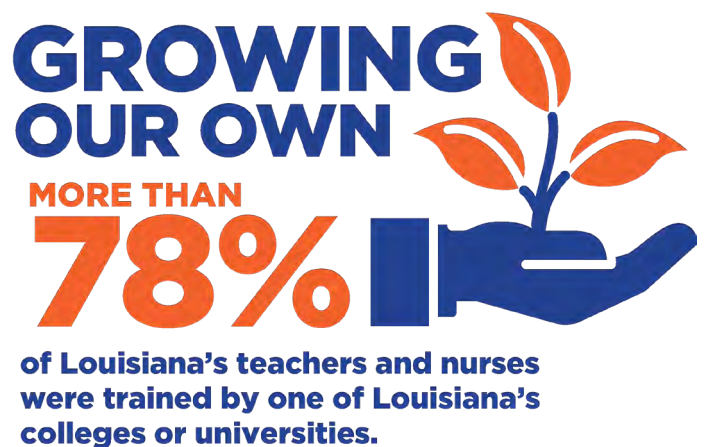


Our challenge is to further increase the number of students completing credentials across our state and to expand the research and innovation that will help to diversify our jobs and strengthen our economy.

► RECOGNIZE ALL CREDENTIALS OF VALUE

In academic year 2023-24, public, private, and proprietary institutions awarded degrees and high-value credentials to more than 73,000 graduates; of those, 59,000 graduates were at public postsecondary institutions. **More than 71% of the credentials earned by 2023-24 public postsecondary graduates were in the critical fields of Business/Logistics, Health, STEM or Applied Technology.** These newly minted workers and the jobs they have filled are the fuel in our 21st-century economy and the drivers of our future.

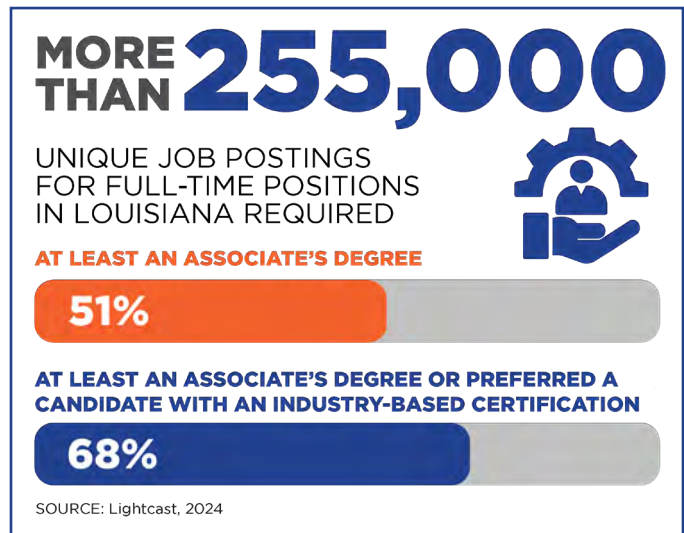
These graduates will go on to be Louisiana's teachers, nurses, electricians, and entrepreneurs. They will build Louisiana's roads, bridges, and homes and become the cyber-engineers, welders, and research chemists driving innovation and economic growth. They demonstrate the essential impacts of public higher education on all aspects of the state's economy.



REGIONAL COMPETITIVENESS

Increasing educational attainment is also critical to strengthening Louisiana’s regional and national competitiveness. The 2024 *U.S. News and World Report* state rankings placed Louisiana at number 50 as a state and 49th in higher education, a sobering reality. But that reality will improve as we continue to near our 2030 goal, as Louisiana colleges and universities produce a generation flexible and resilient, equipped with relevant, essential skills and ready to learn and lead throughout their careers.

If we reached our 60% attainment goal today, along with the envisioned higher graduation rates and lower student debt levels, Louisiana would rank 23rd in higher education, advancing from second-to-last in the country to the middle of the pack nationwide, and above our regional state neighbors Alabama, Arkansas, Mississippi, Oklahoma, Tennessee, and Texas.



STRENGTHENING WORKFORCE PARTICIPATION

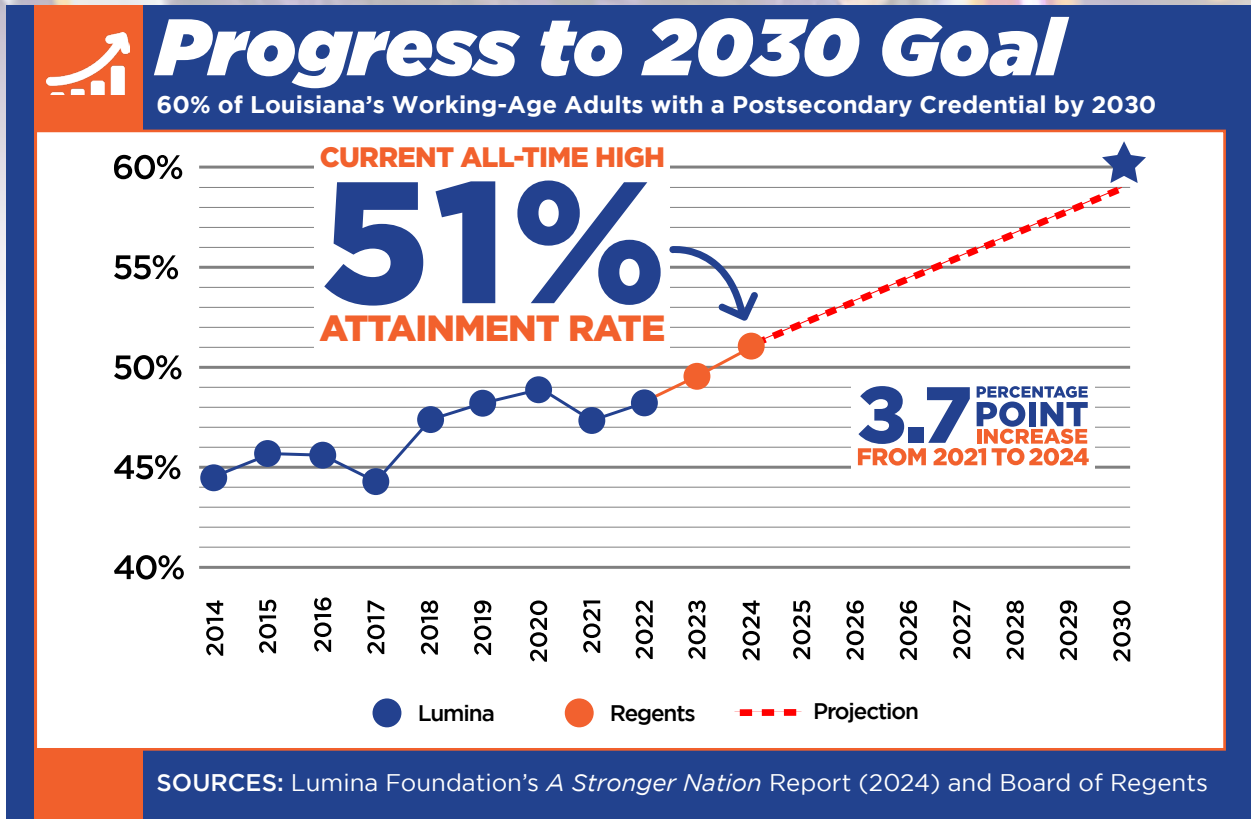
While unemployment levels across the state are at a generational low, the proportion of Louisiana’s working-age adults who are employed or seeking work in 2024 is 58.6%, among the lowest in the country, according to the Louisiana Workforce Commission. **The overall workforce participation rate for those who hold postsecondary credentials is close to six percentage points higher. Education is key to increasing the number of Louisianians fully engaged in our state workforce.**

“ *Our partnership with Louisiana’s two-year and four-year institutions is critical to produce a ready workforce that addresses the unique local and regional needs of business and industry. Our strong collaboration with the Board of Regents has positioned us to move policy that impacts and advances our state farther and faster. This collective one-team approach is the secret sauce to improve our state.* **”**

Secretary Susana Schowen
Louisiana Workforce Commission

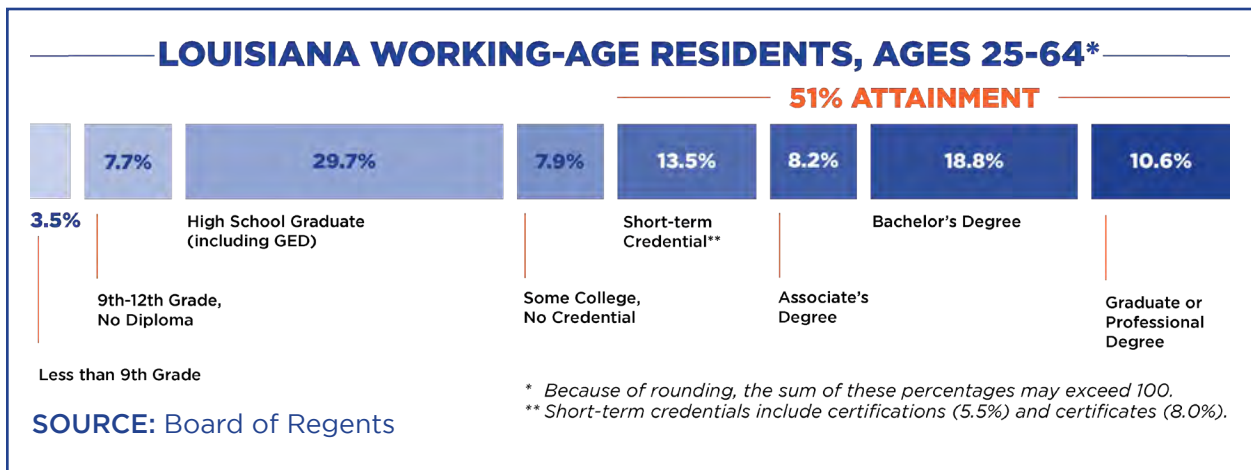


Louisiana Attainment



Getting to 60%

Approximately 9% attainment increase needed to reach 60% goal by 2030





GOAL
DOUBLE THE
NUMBER OF
COMPLETERS
 by
2030



85,000
COMPLETERS

TODAY = 73,461

In order to meet our goal of doubling the number of completers by 2030, we must reach 85,000 completers. In 2024, there were 73,461 completers across public/private postsecondary institutions and proprietary schools. **The total number of completers has increased by 10.4% from 2022-23 to 2023-24.**



SCAN CODE TO VIEW

MASTER PLAN
DATA
DASHBOARD



“ *Education is a lifeboat that can enable Louisiana’s residents to literally weather any storm. We’re proud to see increased success as we develop talent, advance research, and strengthen the pipeline to employment, ensuring more people and communities across our state prosper.* **”**

Dr. Kim Hunter Reed
 Commissioner of Higher Education

Year Five Major Accomplishments



Launched the legislatively created College and University Deferred Maintenance & Capital Improvement Program to begin addressing the \$2B deferred maintenance backlog.



A partnership of higher education and businesses led by LSU received a \$160 million NSF ENGINES grant for next-generation energy research and training.



Started a student-run Security Operations Center (SOC) to enhance cybersecurity across higher education and provide student training in a critical workforce area.



No increase in tuition since 2016 or fees since 2020, highlighting our commitment to affordability for all students to pursue a credential of value.

LOUISIANA DUAL ENROLLMENT

41K

HIGH SCHOOL STUDENTS PARTICIPATED IN DUAL ENROLLMENT IN 2023-24

This year, we continued to broaden access to dual enrollment courses. **As a result, in 2023-24, 41,208 high school students enrolled in public postsecondary college courses, 12% growth from the previous year.** This includes an increase of more than 1,100 African American students.

Updated eligibility criteria have been adopted to recognize multiple ways in which students can demonstrate readiness for college-level learning. Further, the new early college pathway to admission has changed the value proposition for students considering dual enrollment, as has the addition of the choice credit modality.

INCREASE OF MORE THAN **1,100** AFRICAN AMERICAN STUDENTS TAKING DUAL ENROLLMENT COURSES COMPARED TO THE PREVIOUS YEAR

FOCUS ON AFFORDABILITY

Since Fiscal Year 2020, funding for GO Grants, Louisiana’s need-based financial aid program, has increased by over \$42 million, providing support for over 35,000 low- to moderate-income eligible students. The per-student average amount of the awards has increased by 36%, while the total number of awards distributed has increased by 43%. Over 52% of students receiving a GO Grant award are women, and 37% are African American.

In its first two years, Louisiana’s new adult financial aid program, M.J. Foster Promise, has supported the education and training of more than 4,000 students in five high-demand fields – information technology, manufacturing, construction, transportation, and healthcare – and graduated 588 Foster Scholars. Most of the students were age 30 or older, and 60% earned less than \$30,000 per year prior to receiving the award. Of the supported students, in year one, 80% were women and nearly half were African American, with graduates overwhelmingly in healthcare fields.

NEW PATHWAYS TO COLLEGE SUCCESS

- Expanded the “Promoting College-Going” high school pilot to 13 parishes to increase college enrollment.
- Allocated \$16.6M for mental health support for students, faculty, and staff at all institutions through a partnership with Louisiana Department of Health.
- Increased statewide capacity of Postsecondary Inclusive Education programs by 30%, providing life skills training and support to special needs students enrolled in college programs.
- All public institutions received the Hunger-Free Campus designation and six successfully competed for \$8,000 each to support efforts to eliminate student food insecurity.
- Introduced Gold, Silver and Bronze Tiers within the Governor’s Military and Veteran Friendly Campus designation to increase support services for veteran students and their families.
- Implemented the National Guard Patriot Scholarship financial aid program serving almost 1,500 students in the first year.
- LOSFA provided outreach and support to almost 60,000 students on their college journey this year.

IMPROVING TRANSFER PATHWAYS

- Supported the awarding of the first Reverse Transfer Degrees to students transferring four-year college credit back to community and community technical colleges.
- Approved the first 24 Universal Transfer Pathways in high-demand fields of study, making it easier for students to carry credits with them when they change institutions.

ADVANCING MATH REFORM

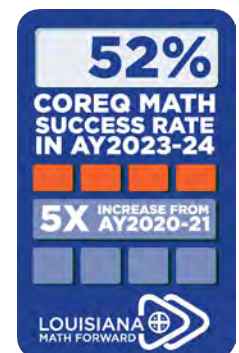
In a preliminary analysis of data from Academic Year 2020-21, Regents found that only 11% of freshmen taking remedial math alone successfully passed a credit-bearing math class in their first academic year. This fall, we fully scaled corequisite math across all Louisiana’s public institutions. In the corequisite approach students do not begin their college-level work in remedial courses, but instead in the math course that they need for their credential. Students are supported by a supplementary instruction experience designed to help them succeed. **During the academic year, Louisiana community colleges and four-year institutions were able to increase the success rate of students almost five-fold, to 52%, using this new approach.** In the coming year, we will advance this work further, while also taking corequisite English to full scale.

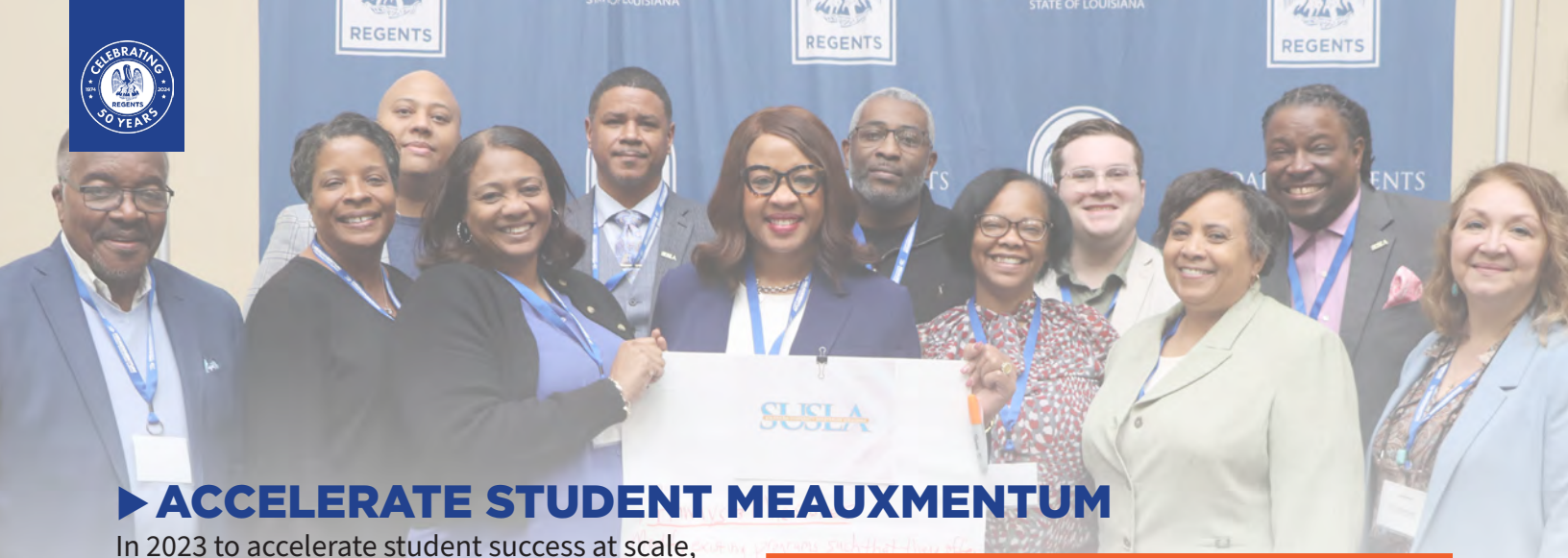
STRENGTHENING THE EDUCATION-TO-EMPLOYMENT PIPELINE

- Implemented a strategic statewide academic planning process to focus on workforce alignment and leverage ongoing business and economic development partnerships.
- Defined credentials of value and counted workforce credentials in Louisiana's attainment rate.
- In 2023-24 the number of graduates in health-related fields increased by more than 900 over the previous year, including 450 additional nursing graduates. Public-Private partnership initiatives will continue to build increased capacity in the coming years.
- Established a pathway for high school through postsecondary students to obtain an Early Childhood Ancillary Certificate while working in a Type 3 childcare center and receiving full pay to address the early childhood educator shortage.
- Louisiana’s Geaux Teach Scholarship program has awarded almost \$2M since its inception, providing annual awards in 2024 to 540 education majors with awards averaging \$3,131 in teacher preparation and \$2,155 in certification programs per student.

SUPPORTING UNIVERSITY-BASED RESEARCH

- Louisiana universities are working to harness the tremendous potential of offshore wind to power our future. UNO’s Wind Energy Hub has made significant progress in this area, and Nunez Community College has launched the Wind Energy Technology Program to meet workforce needs across the region.
- Leveraged NSF funding to establish multiple Industry-University Cooperative Research Centers, including the Center for Visual and Decision Informatics and Center for Innovations in Structural Integrity Assurance, which bring together public institutions with regional business and industry to solve critical problems and innovate for the future.





▶ ACCELERATE STUDENT MEAUXMENTUM

In 2023 to accelerate student success at scale, Regents brought together over 300 members of Louisiana’s higher education community at our inaugural Meauxmentum Summit, the first such event in the state’s history, to introduce the Louisiana Meauxmentum Framework. The framework has been designed specifically to enable institutions from the Louisiana Community and Technical College System, Louisiana State University System, Southern University System, and University of Louisiana System to enhance student success. The strength of this new model lies in braiding powerful drivers to transform student success across Louisiana. The Meauxmentum Approach guides first-year college students in making purposeful decisions about their academic goals. It provides a clear pathway to graduation, incorporating relevant English and mathematics courses, and fosters a strong connection to their chosen discipline and future careers. As students progress toward graduation, it offers support through academic milestones and integrates experiences that promote deeper, more engaged learning. This holistic support system



addresses both in-class and out-of-class challenges, ensuring that students stay on track and remain motivated throughout completion.

“ I think the Meauxmentum initiative is the most comprehensive, well-articulated, and well-executed statewide effort in student success that exists anywhere in the country. ”

George Mehaffy
Former Vice President for Academic Leadership and Change, American Association of State Colleges and Universities (AASCU)

Louisiana’s second Meauxmentum Summit was held in February 2024 to continue advancing each campus’ specific improvement plans to transform advising and introduce high-impact practices. Institutions created teams comprised of representatives best positioned to assist in achieving their

student success goals. **Regents was awarded more than \$1M in external grant funding to directly support the institutions as they implement their Meauxmentum plans.**



Next Steps

As we continue to build on the accomplishments of the past five years, it is crucial to focus on areas that will push the pace of progress and innovation. Topping that list is the need for a sustained state financial commitment to ensure higher education remains accessible and affordable. **We must continue to invest in the talent development of our people.** Equally, though, campuses and systems will continue to embrace efficiency, prioritizing high-demand and high-need programs combined with robust student supports to strength our success. As the 2019 Master Plan stated, “Postsecondary education is fundamentally an investment with extensive long-term benefits to individuals and communities not an expenditure without a return.” Providing a path to and through education and training programs is the best insurance of a prosperous future for individuals and Louisiana.

To secure a brighter future for our state we must invest in our people. Louisiana’s economic future will be driven and defined by its talent pipeline.

In addition, we will strengthen our education-to-employment pipeline in the following ways. **In partnership with the Louisiana Workforce Commission and other key stakeholders, we must sharpen our internal alignment of all fields of study to the world of work, including improving student career exploration and navigation and robust work-based learning experiences.** Regional leaders must be energized to understand and strive to meet their attainment goals while engaging business partners to meet the need for a skilled and adaptable workforce. And **all partners should capitalize on the significant recent energy investments in Louisiana and other emerging fields to drive innovation and job creation.**

To secure this prosperous vision for our state, we must successfully articulate the power of education to change lives and the significant return on that investment of time and money to individuals, their families and communities. Students and parents must understand the importance and the utility of their learning in this knowledge economy. Barriers to access and success must be removed as we prioritize the adoption of what works and drive continuous improvement. And innovation must be supported and encouraged - embedding new technologies, including artificial intelligence, into our education offerings to meet employer expectations and lead the way in the future of work.



BOARD of REGENTS
STATE OF LOUISIANA

This public document is published at a total cost of \$2.36. Five hundred (500) copies of this public document were published in this first printing at a cost of \$1,183.14. The total cost of all printings for this document including reprints is \$1,183.14. This document was published by OTS-Production Support Services, 627 North 4th Street, Baton Rouge, LA 70802, for the Louisiana Board of Regents, 1201 North 3rd Street, Baton Rouge, LA 70702, to fulfill its constitutional authority to formulate and make timely revisions to a master plan for postsecondary education under authority of Article VIII, Section 5(D)4 of the Louisiana Constitution. This material was printed in accordance with the standards of printing by state agencies established in R.S. 43:31. Printing of this material was purchased in accordance to the provisions of Title 43 of the Louisiana Revised Statutes.

www.laregents.edu
#LaProsper