

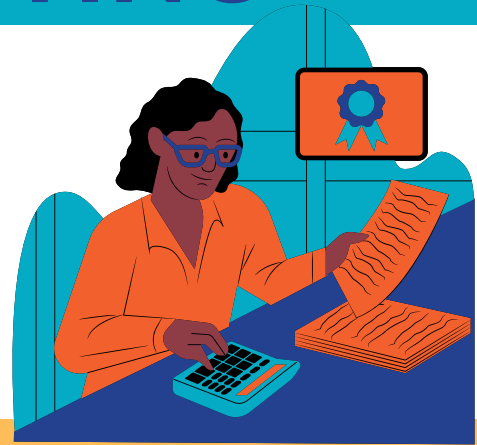


# ACCOUNTING

## GENERAL INFORMATION

Are you considering a career in accounting? Pursuing an accounting degree can lead to a challenging and rewarding career in a field vital to the success of businesses and organizations of all types. In an accounting pathway, you will develop a strong foundation in financial accounting, managerial accounting, auditing, taxation, and other critical areas.

As a result, you will be well-prepared for various career paths, ranging from traditional accounting roles in public accounting firms, government agencies, and corporations to positions in finance, management, and consulting.



## SKILLS YOU'LL DEVELOP

- Math Reasoning
- Analytical Thinking
- Attention to detail
- Communication Skills

## POTENTIAL CAREERS

- Accountant
- Auditor
- Financial Analyst
- Tax Advisor
- Budget Manager

## Transfer pathways start at a Louisiana community college.

- Complete the first 60 credits on your transfer pathway at a community college
- Earn your associate degree
- Apply to a public Louisiana university that offers a bachelor's degree in Accounting
- Transfer in with a guarantee that all 60 credits will apply to your bachelor's degree



## DID YOU KNOW?

You can earn credit for a course through accelerated programs, like:

- Dual Enrollment
- Advanced Placement
- International Baccalaureate
- Prior Learning Assessment
- College Level Examination Program



**Talk to an advisor at your college today!**



# FIRST 60 CREDITS IN ACCOUNTING

Subject	Required Courses	Common Course Numbers if Applicable
Business	Intro to Business OR Business Law Business Statistics II Business Calculus Intro to Financial Accounting Intro to Managerial Accounting	CBUS 2103 or CBUS 1003, CBUS 2323, CBUS 2313, CACC 2113, CACC 2213
English	Composition I and II	CENL 1013, CENL 1023
Fine Arts	One Fine Arts Elective	
Humanities	Public Speaking and Two Humanities Electives*	CCOM 2013
IT	One IT Elective that covers at least 50% Excel*	
Math/Analytical Reasoning	College Algebra Intro to Statistics	CMAT 1213, CMAT 1303
Natural Sciences	One Life Science, one Physical Science, and chose one more course in the same discipline from either*	
Social/Behavioral Science	Microeconomics Macroeconomics	CECN 2223, CECN 2213
Other	Three credits of electives*	

**\*Each student may select their preferred courses in these subject areas.**

## START AT ANY OF THESE COLLEGES:



## FINISH AT ANY OF THESE UNIVERSITIES:

- Bossier Parish Community College
- LSU at Eunice
- River Parishes Community College

- Grambling State University
- Louisiana State University
- LSU at Alexandria
- LSU in Shreveport
- Louisiana Tech University
- McNeese State University
- Nicholls State University
- Northwestern State University
- Southeastern Louisiana University
- Southern University A&M
- University of New Orleans
- University of Louisiana at Lafayette
- University of Louisiana at Monroe

