



MECHANICAL ENGINEERING

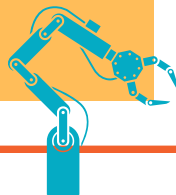
GENERAL INFORMATION

Are you interested in designing and building innovative solutions to complex problems? If so, an engineering degree might be the perfect pathway for you. The field of engineering covers a wide range of disciplines, including electrical, mechanical, civil, and aerospace engineering, to name a few.

With a strong emphasis on practical skills and problem-solving, an engineering degree equips you with the knowledge and expertise to tackle real-world challenges and contribute to technological advancements. Whether it's developing sustainable infrastructure, designing cutting-edge technologies, or exploring new frontiers in space exploration, engineering offers endless opportunities for creativity, impact, and personal growth.

Transfer pathways start at a Louisiana community college.

- Complete the first 60 credits on your transfer pathway at a community college
- Earn your associate degree
- Apply to a public Louisiana university that offers a bachelor's degree in mechanical engineering
- Transfer in with a guarantee that all 60 credits will apply to your bachelor's degree



SKILLS YOU'LL DEVELOP

- Mechanical design
- Analytical thinking
- Attention to detail
- Problem-solving skills

POTENTIAL CAREERS

- Mechanical Engineer
- Robotics Engineer
- HVAC Engineer
- Product Design Engineer
- Product Designer
- Quality Engineer

DID YOU KNOW?

You can earn credit for a course through accelerated programs, like:

- Dual Enrollment
- Advanced Placement
- International Baccalaureate
- Prior Learning Assessment
- College Level Examination Program



Talk to an advisor at your college today!





FIRST 60 CREDITS IN MECHANICAL ENGINEERING

Subject	Required Courses	Common Courses Numbers if applicable
Engineering	Statics Dynamics Material Science	CENG 2013, CENG 2023, CENG 2033
English	Composition I and II	CENL 1013, CENL 1023
Fine Arts	One Fine Arts Elective*	
Humanities	Three Humanities Electives*	
Math	College Algebra Calculus I Calculus II Calculus III	CMAT 1213, CMAT 2113 CMAT 2123, CMAT 2133
Natural Sciences	Life Science General Chemistry and Lab Physics I and II for Engineering & Science	CBIO 1013, CCEM 1121, CCEM 1123, CCEM 1131, CCEM 1133, CPHY 2133
Social/Behavioral Science	Two Social/Behavioral Electives	

***Each student may select their preferred courses in these subject areas.**

START AT ANY OF THESE COLLEGES:



FINISH AT ANY OF THESE UNIVERSITIES:

- Bossier Parish Community College

- Grambling State University
- Louisiana State University
- Louisiana Tech University
- McNeese State University
- Nicholls State University
- Northwestern State University
- Southeastern Louisiana University
- Southern University A&M
- University of Louisiana at Lafayette
- University of New Orleans

