



Friday, April 19th, 2024

**LSU Health—New Orleans
Human Development Center
411 S. Prieur St, New Orleans LA 70112**



BOARD of REGENTS
STATE OF LOUISIANA





LSU Health

NEW ORLEANS

Welcome!

As Chair of the Simulation Medical Training and Education Council of Louisiana (SMTEC-LA), on behalf of the Louisiana Board of Regents, I would like to welcome you to the Simulation Expo 2024: Discovering, Sharing, and Leading Simulation Education. It is certainly an honor and a pleasure to host you here on the campus of LSU Health – New Orleans.



The purpose of the SMTEC-LA is to develop an infrastructure and governing process that coordinates and maximizes simulation training resources and expertise, in both urban and rural areas of Louisiana. The Council mission is to enhance effective use of simulation training for all Louisiana students, faculty, and residents, fellows, and practitioners throughout the health profession in the state.

The goal of the Simulation Expo 2024 is to bring together simulation novice-expert educators, director/program managers, and simulation specialists, as well as vendors from all areas. This event hopes to provide professional development and opportunities for collaboration on simulation program development throughout the state.

The Planning Committee of the SMTEC-LA is very excited to provide a venue for networking among simulation educator professionals and allow attendees to develop new and innovative partnerships.

Generous funding from the Louisiana Board of Regents has made this event possible. The goal of this educational experience is for healthcare professional students from across the state to have an enhanced educational experience. Such investments are crucial for the development and training of future healthcare professionals in Louisiana, as each one of you play a vital role in the state's healthcare system.

Warm Regards,

Daryl P. Lofaso, Ph.D., M.Ed., RRT, CHSE
Chair, Simulation Medical Training and Education Council of Louisiana
Assistant Professor School of Medicine—Research
Assistant Professor School of Allied Health—PA
Director of Simulation Operations
Director of Clinical Skills Lab

CONTINUING EDUCATION CREDIT

LSUSOMNO and LSUHNO SON ensures balance, independence, objectivity, and scientific rigor in all of its educational activities. Faculty, planners or anyone in a position to control content are required to disclose to participants any financial relationships they may have had with ineligible entities within the last 24 months, including in-kind donations. An ineligible entity is any entity producing, marketing, re-selling, or distributing health care goods or services consumed by or used on patients. Disclosure of financial relationships must be made during the planning stages of the activity, and all relationships thus disclosed are communicated to the audience prior to the activity.

The following faculty and planning committee members have reported they do not have any financial relationships with ineligible entities: Dr Doctor, MD, Doctor Doctor, MD, CME Coordinator, CME Coordinator, Program Director

The Louisiana State University-
School of Medicine, New Orleans is accredited by the Accreditation Council for
Continuing Medical Education (ACCME) to provide continuing medical education for physicians.

The Louisiana State University School of Medicine, New Orleans designates this live educational activity for a maximum of X.00 AMA PRA Category 1 Credits™. Physicians should claim only the credit commensurate with the extent of their participation in the activity.

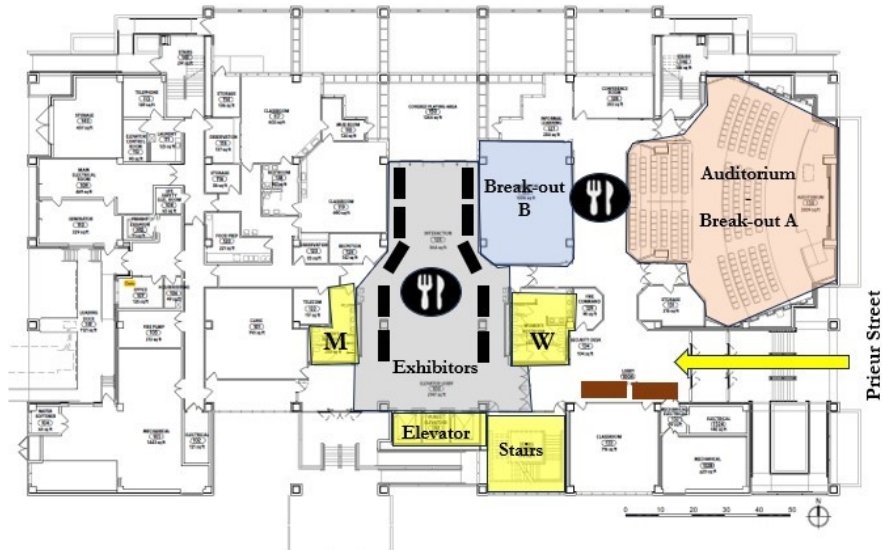
Louisiana State University Health New Orleans (LSUHNO) School of Nursing - Nursing Continuing Professional Development & Entrepreneurial Enterprise (Po111) is accredited as a provider of nursing continuing professional development by the American Nurses Credentialing Center's (ANCC) Commission on Accreditation.

Nursing participants may earn X.0 NCPD contact hours. Each nursing participant must be present for the entire session for which contact hours are requested and must complete an evaluation of each session to receive contact hours.

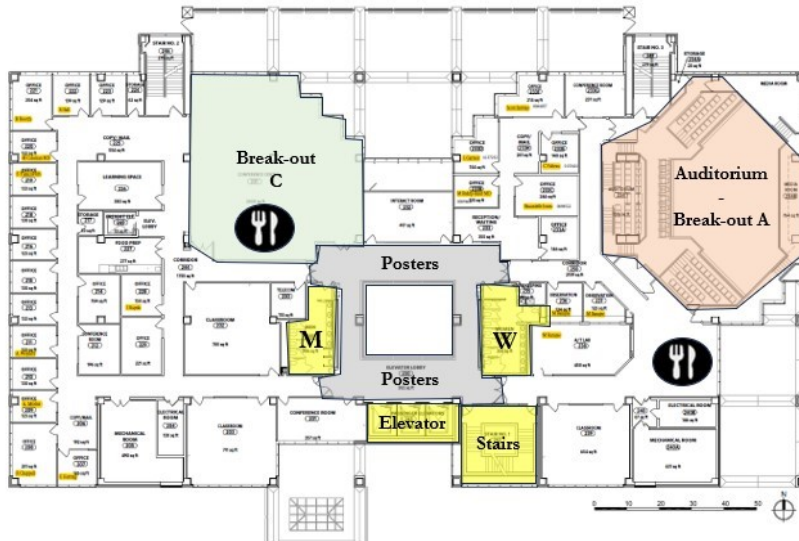
AGENDA OVERVIEW

8:00 am	Check-in and Breakfast		
8:30 am-9:30 am	Welcome and Opening Keynote Michael Seropian, MD, FRCPC, FSSH		1st Floor Auditorium
9:30 am– 9:45 am	Break		
9:45 am-10:30 am	Breakout Session 1	A B C D	1st Floor Auditorium 2nd Floor Conference Center 3rd Floor Chancellor Dining 1st Floor Classroom 126
10:30 am-11:00 am	Exhibits & Poster Viewing		1st Floor Exhibit Hall 2nd Floor Elevator Lobby
11:00 am-11:45 am	Breakout Session 2	A B C D	1st Floor Auditorium 2nd Floor Conference Center 3rd Floor Chancellor Dining 1st Floor Classroom 126
11:45 am-12:45 pm	Lunch, Exhibits, Poster Viewing, Open house/Tours		1st Floor Exhibit Hall 2nd Floor Elevator Lob
12:45 pm-1:30 pm	Breakout Session 3	A B C D	1st Floor Auditorium 2nd Floor Conference Center 3rd Floor Chancellor Dining 1st Floor Classroom 126
1:30 pm-2:00 om	Exhibits & Poster Viewing		1st Floor Exhibit Hall 2nd Floor Elevator Lob
2:00 pm-3:00 pm	Afternoon Keynote Dawn Taylor Peterson, PhD		1st Floor Auditorium
3:00 pm-3:30 pm	Closing Remarks		1st Floor Auditorium

1st Floor



2nd Floor



3rd Floor



HDC Key

- Bathrooms, Elevators & Stairs
- Locations to Eat

AM KEYNOTE SPEAKER

Michael Seropian, MD, FRCPC, FSSH



Dr. Seropian is a practicing pediatric anesthesiologist and Professor Anesthesiology & Pediatrics at Oregon Health & Science University. Dr Seropian has a passion for the concepts of resource management and has trained hundreds of individuals in these important behavioral skills. Dr. Seropian has more than 29 years of experience in simulation development and training. He was most recently the President of the Global Network for Simulation in Healthcare (GNSH) and is the current Director of Simulation for the Department of Anesthesiology at OHSU. He has published extensively and trained hundreds of individuals across professions in the use of simulation-based methods. He is the owner and President of The SimHealth Group, an interprofessional company that works for the world to design, develop an enhanced simulation-based training, education, and assessment. He was President of Society for Simulation in Healthcare (SSH) in 2011 and on the Board of Directors for seven years. He also sits on the American Society of Anesthesiology Editorial Board on simulation education.

PM KEYNOTE SPEAKER

Dawn Taylor Peterson, PhD



Dawn Taylor Peterson is an Associate Professor at The University of Alabama at Birmingham (UAB) with faculty appointments in the Heersink School of Medicine, Department of Medical Education and the School of Health Professions, Department of Health Services Administration. She holds a PhD in Instructional Design, as well as an Educational Specialist degree and a Master of Arts in Education. She completed her initial simulation training and the Advanced Comprehensive Instructor Course at the Center for Medical Simulation in Cambridge, Massachusetts. Dr. Peterson is also a TeamSTEPS® Master Trainer. Her primary interests are debriefing, interprofessional simulation, and faculty development for simulation. She has over 25 years of experience in the field of education and 12 years of experience in the field of simulation. She currently serves as Director for the Office of interprofessional Simulation at UAB. Dr. Peterson has facilitated workshops and led podium presentations at multiple conferences including the International Meeting on Simulation in Healthcare (IMSH), the National Academies of Practice (NAP), and the Association of SP Educators (ASPE). She has also served as a keynote speaker for the Simulation Professionals of Texas annual meeting (SPOT) and the NYSIM—CUNY IPE Summit (New York City Simulation Summit).

SIMULATION MEDICAL TRAINING AND EDUCATION COUNCIL OF LOUISIANA



PURPOSE AND MISSION OF THE COUNCIL

Develop an infrastructure and governing process that coordinates and maximizes simulation training resources and expertise, in both urban and rural areas of the state. The Council mission is to enhance effective use of simulation training for students, faculty, residents, fellows, and practitioners throughout the health professions statewide.

STRATEGIC AREAS OF FOCUS

- Provide education and training opportunities for simulation trainers throughout the state, with an emphasis on development of programs that meet current and future standards.
- Assist in the development of an infrastructure for the provision of high quality simulation education in a variety of educational settings (i.e. community colleges, universities, health care agencies).
- Provide an opportunity for Council members from a wide spectrum of agencies and institutions to collaborate on program development which meets the needs of students, health care practitioners, and faculty from across the state.



CORE RESPONSIBILITIES OF THE SMTEC-LA



Meet at least three times a year to determine strategic priorities



Work with the Board of Regents and the Health Works Commission to obtain funding for initiatives identified by the Council



Develop, implement, and support simulation staff and faculty development programs

VENDORS

LOCATION:

1ST FLOOR, EXHIBIT SPACE

TIME:

10:30 AM-11:00 AM, ANYTIME

Avkin

CAE Healthcare

Coherent Digital

Gaumard Scientific

Laerdal Medical

Lecat's Ventrilloscope, LLC

Medvision, LLC

Medical Shipment, LLC

Nasco Healthcare

Sentinel U



Check-in and Breakfast	8:00-8:30am		Hallway outside
			Topic
Welcome / Introduction			Welcome
Morning Keynote	8:30-9:30am		Using Simulation to Develop Individual Skills and Improve Team Performance
Breakout Session 1	9:45 - 10:30am	A	Cultivating Consistency: Enhancing Simulation Debriefing Practices in Nursing Education Through a Best Practices Approach
		B	Can You Escape Fundamentals? Developing an Educational Healthcare Escape Room
		C	Interactive Learning and Dosage Calculation Performance
		D	Using Simulation to Improve Recognition of Patient Decline & Deployment of Rapid Response Teams: A Mixed Methods Study
Exhibits and Poster Viewing	10:30-11:00am		Exhibits
			Topic
Breakout Session 2	11:00-11:45am	A	Selecting and Developing Simulation Scenarios and Cases Using an Escape Room Design
		B	Enhancing Undergraduate Nursing Education: Labor and Delivery Orientation Using Simulation
		C	The Effect of Simulation on Nursing Students' Attitude Toward Poverty
		D	Aiming for Authenticity in Interprofessional Simulation Experiences
Lunch / Tour			
Exhibits / Poster Viewing	11:45-12:45pm		Eating Throughout 1st Floor, Chancellor Dining (335), Exhibit Space
			Topic
Breakout Session 3	12:45-1:30pm	A	Examining the Perceptions Among Undergraduate Nursing Students Using Virtual Reality in a Clinical Simulation: A Mixed Methods Explanatory Study
		B	Fostering Cultural Competence with Simulation: An Innovative Approach to Improving Nursing Care for Spanish-Speaking and Limited-English Proficiency Patients
		C	Immersive Learning: Transforming Nursing Education with Virtual Reality
		D	Hearing Voices Simulation
Exhibits and Poster Viewing	1:30-2:00pm		
			Topic
Afternoon Keynote	2:00-3:00pm		Interprofessional Debriefing: Best Practices and Tools for Success
Closing	3:00-3:30pm		Remarks and Evaluation

ACTIVITIES

Exhibit Hall (Throughout the 1st Floor), 2nd Floor Elevator Lobby		
	Speaker	Location
Performance	Daryl P. Lofaso, PhD, MEd, RRT, CHSE	Auditorium (130)
	Michael Seropian, MD, FRCPC, FSSH	
Read a Standardized Script	Aimme J. McCauley, DNP, RN Elizabeth C. Hopkins-Ibsen, MSN, RN Mina J. Hogan, MS	Auditorium (130)
	Amelia Washington, DNP, RN Lori Dougherty, MSN, RN, CHSE Sierra Higgins, MSN, RN, CNE	Conference Center (231)
	Robin Beacom, DNP, APRN, FNP-C Tricia Templet, DNP, CPNP-PC, FNP-C Cynthia Watson, DNP, APRN, FNP-BC, BC-ADM	Chancellor Dining/Activity (335)
Teams in New Graduate Nurses:	Debra T. Pogue, Ph.D, MN, APRN, ACNS-BC, CCRN-K Claude D'antonio, MD Ibrahim Musa Yola	Classroom (126)
Exhibit Hall (Throughout the 1st Floor), 2nd Floor Elevator Lobby		
		Location
	Melissa Madden, PhD, MS	Auditorium (130)
	Aimme J. McCauley, DNP, RN Elizabeth C. Hopkins-Ibsen, MSN, RN Mina J. Hogan, MS	Conference Center (231)
	Gwen Leigh, DNP, RN, CNE Heather Richardson, MSN, RN, CPN Samantha Cormier, MSN, RN, CCRN-CSC, NVRN-BC, CNE Jeanne M. Cartier, PhD, APRN, PMHNP-BC	Chancellor Dining/Activity (335)
	Dawn Taylor Peterson, PhD	Classroom (126)
Exhibit Hall (Throughout the 1st Floor), 2nd Floor Elevator Lobby		
Space 1st Floor, and 2nd floor Classroom	Tours of: Lions Building (2020 Gravier St.), CALS Building (2021 Perdido St.)	
		Location
Community Course:	Justin Fontenot, DNP, RN, NEA-BC, FAADN Michael Hebert, DNP, M.Div, MSN, BA, RN, MEC	Auditorium (130)
Proficiency Clients	Aimme J. McCauley, DNP, RN Mina J. Hogan, MS	Conference Center (231)
	Duane Whitecotten, RN Luanne Bilingsley, DNP, MBA, APRN, ACNS-BC, CNE	Chancellor Dining/Activity (335)
	Phoebe A. Henderson, MSN, RN, CNE Heather Richardson, MSN, RN, CPN	Classroom (126)
Exhibit Hall (Throughout the 1st Floor)		
		Location
Success	Dawn Taylor Peterson, PhD	Auditorium (130)
	Daryl P. Lofaso, PhD, Med, RRT, CHSE	

BREAKOUT SESSION 1

9:45 AM-10:30 AM

	Topic	Objectives	Speaker(s)	Location
A	Cultivating Consistency: Enhancing Simulation Debriefing Practices in Nursing Education Through a Standardized Script and Best Practices Approach	<ul style="list-style-type: none"> • Acquire skills to implement a terminology-specific debriefing script, utilizing Plus-Delta and the GAS method for consistent adherence to standards. • Gain insight into addressing challenges in implementing healthcare simulation standards and methods for effective debriefing. • Understand the impact of scripted debriefing on student satisfaction in simulation. 	Aimme J. McCauley, DNP, RN, CNE, CHSE Elizabeth C. Hopkins-Ibsen, MSN, RN Mina J. Hogan, MS	Auditorium (130)
B	Can You Escape Fundamentals? Developing an Educational Healthcare Escape Room	<ul style="list-style-type: none"> • Attendees will learn what an escape room is and how it can be used a tool in the simulation setting to ignite a higher level of thinking. • It will provide educators with a new innovative teaching method that has endless opportunities. • Gain knowledge of the importance of interactive simulation puzzles/scenarios that tie content and skills together while engaging team work and communication in groups of students. See how each aspect of the room will tie into the different levels of NEXTGEN. 	Amelia Washington, DNP, RN Lori Dougherty, MSN Sierra Higgins, MSN, RN, CNE	Conference Center (231)
C	Interactive Learning and Dosage Calculation Performance	<ul style="list-style-type: none"> • Explore the concept of web-based interactive learning. • Assess the impact of testing modality on dosage calculation success. • Examine the relationship between interactive learning and competency. • Apply insights to promote safe and competent nursing practice. 	Robin Beacom, DNP, APRN, FNP-C Tricia Templet, DNP, CPNP-PC, FNP-C Cynthia Watson, DNP, APRN, FNP-BC, BC-ADM	Chancellor Dining/ Activity (335)
D	Using Simulation to Improve Recognition of Patient Decline & Deployment of Rapid Response Teams in New Graduate Nurses: A Mixed Methods Study	<ul style="list-style-type: none"> • By the end of the presentation participants will learn methods to improve cardiac resuscitation quality (outcome). • Assessment tools which may be integrated into simulated activities. • Be able to analyze reflective feedback for center and faculty improvement. 	Debra T. Pogue, PhD, MN, APRN, ACNS-BC, CCRN-K Claude D'antonio, MD Ibrahim Musa Yola	Classroom (126)

BREAKOUT SESSION 2

11:00 AM-11:45 AM

	Topic	Objectives	Speaker(s)	Location
A	Selecting and Developing Simulation Scenarios and Cases Using an Escape Room Design	<ul style="list-style-type: none"> Recognize research supporting the use of simulation-based education in meeting clinical replacement hours. Identify the eleven criteria for developing an INACSL Healthcare Simulation Standards of Best Practice 'Design'. Identify various types of simulation modalities and fidelity for achieving program and student learning outcomes. Apply the INACSL Standard of Best Practice 'Simulation Design' to an example escape room scenario. 	Melissa Madden, PhD, MS	Auditorium (130)
B	Enhancing Undergraduate Nursing Education: Labor and Delivery Orientation Using Simulation	<ul style="list-style-type: none"> Enhance maternal-newborn learning experience, knowledge, and confidence through the integration of simulation-based orientation. Recognize opportunities to optimize clinical efficiency in specialty healthcare environment through simulation. 	Aimme J. McCauley, DNP, RN, CNE, CHSE Elizabeth C. Hopkins-Ibsen, MSN, RN Mina J. Hogan, MS	Conference Center (231)
C	The Effect of Simulation on Nursing Students' Attitude Toward Poverty	<ul style="list-style-type: none"> Discuss social determinants and the importance of attitudes toward poverty. Describe the Food for a Week simulation and the Attitude Toward Poverty – Short Form. Understand the effects of simulation on the attitudes of nursing students toward poverty. 	Gwen Leigh, DNP, RN, CNE Heather Richardson, MSN, RN, CPN Samantha Cormier, MSN, RN, CCRN-CSC, NVRN-BC, CNE Jeanne M. Cartier, PhD, APRN, PMHNP-BC	Chancellor Dining/Activity (335)
D	Aiming for Authenticity in Interprofessional Simulation Experiences	<ul style="list-style-type: none"> Explain the importance of authenticity in interprofessional simulation experiences. Describe two phases of simulation that are most susceptible to reinforcing stereotype and bias. Describe three strategies to help achieve authenticity and reduce stereotype and bias. 	Dawn Taylor Peterson, PhD	Classroom (126)

BREAKOUT SESSION 3

12:45 PM-1:30 PM

	Topic	Objectives	Speaker(s)	Location
A	Examining the Perceptions Among Undergraduate Nursing Students Using Virtual Reality in a Community Course: A Mixed Methods Explanatory Study	<ul style="list-style-type: none"> • Students learning how to conduct a home visitation experience through VR. 	Justin Fontenot, DNP, RN, NEA-BC, FAADN Michael Hebert, DNP, M.Div., MSN, BA, RN, MEC	Auditorium (130)
B	Fostering Cultural Competence with Simulation: An Innovative Approach to Improving Nursing Care for Spanish-Speaking and Limited-English Proficiency Clients	<ul style="list-style-type: none"> • Recognize opportunities to utilize simulation and technology in healthcare education. • Learn methods to empower nursing students to apply advanced communication skills. • Understand the impact of employing simulation to address language barriers and cultural competency in healthcare. 	Aimme J. McCauley, DNP, RN, CNE, CHSE Mina J. Hogan, MS	Conference Center (231)
C	Immersive Learning: Transforming Nursing Education with Virtual Reality	<ul style="list-style-type: none"> • Articulate the significance of simulation education in the nursing field. • List the key benefits and difficulties associated with simulation-based learning and understand its role in enhancing clinical skills, critical thinking, and decision-making abilities among nursing students. • Engage in collaboration discussions to explore innovative simulation practice and share their experiences and strategies for implementing simulation education effectively. 	Duane Whitecotten, RN Luanne Bilingsley, DNP, MBA, APRN, ACNS-BC, CNE	Chancellor Dining/Activity (335)
D	Hearing Voices Simulation	<ul style="list-style-type: none"> • Discuss the day-to-day challenges for people who hear voices. • Understand the diverse experiences of people who hear voices. • Develop empathy toward people who hear voices. 	Phoebe A. Henderson, MSN, RN, CNE Heather Richardson, MSN, RN, CPN	Classroom (126)

POSTER PRESENTATIONS

LOCATION:

2ND FLOOR, ELEVATOR LOBBY

TIME:

10:30 AM-11:00 AM, ANYTIME

	Poster Titles	Presenter (s)
1	Using a Hospital Upskill Program to Support Student Nurse Success	Jennie Seal, RN Jennifer Couvillon, PhD, MSN, RN-BC Ann Lockhart, MN, RN-BC Stuart Redfearn, MSN, BSN Angelique White-Williams, BSN, MA, MN, DNS, APRN-CNS
2	Clinical Simulation to Develop Moral Courage in Nursing Students	Melissa Madden, PhD, MSN, CNE
3	The Effects OF High-fidelity Simulation and Traditional Didactic Lecture on First Semester Junior, Baccalaureate Nursing Students' Knowledge Acquisition, and Self-Confidence Using the Solomon-Four Research Design	Trudy Williams. PhD, RN
4	Advantages of Employing Virtual Reality Simulation Within Small Group Settings	Matthew Farley, MSN, RN, PCCN-CMC Skyler Braswell, MSN, RN, NP-C, NREMT-P Becca Dauzat, MSN, RN Sawsan Farhat, MSN, RN
5	Historical Evolution of Simulation and Its Contribution to Undergraduate Nursing Education	Amie Chauvin, MSN, RN
6	Escape Rooms for Healthcare Teamwork Simulation	Paula Griswold, PhD Jessica Lasiter, MHIM, BS Emily Mike, OTD Ashley Barbo, PharmD

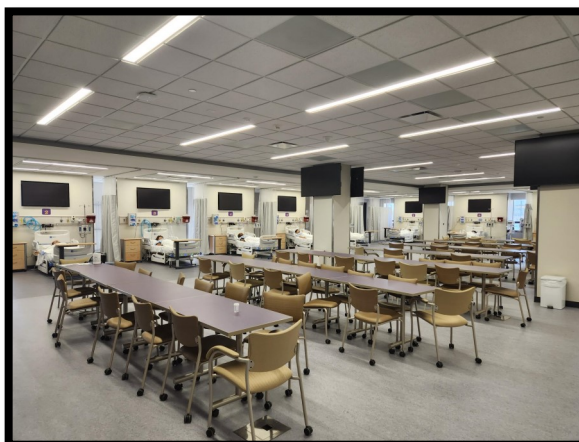
ISIDORE COHN, JR. MD STUDENT LEARNING CENTER, 6TH FLOOR
RUSSELL C. KLEIN M.D. ('59) CENTER FOR ADVANCED PRACTICE, 5TH FLOOR
LIONS BUILDING 2020 GRAVIER



Standardized Patient Center:
CALS 2021 PERDIDO ST, 1st FLOOR



Nursing Skills and Technology Center/Simulation Center
CALS 2021 Perdido St, 2nd Floor



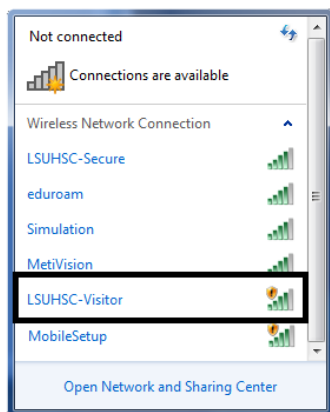
GUEST WIRELESS

Username: **LSUV007**

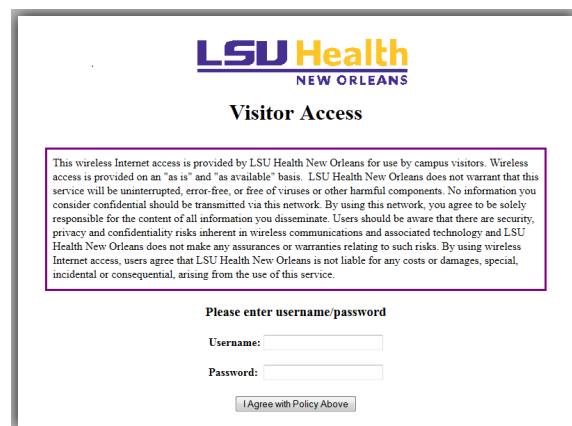
Password: **504!Tigers@LSU!**

*Note: The password is case sensitive

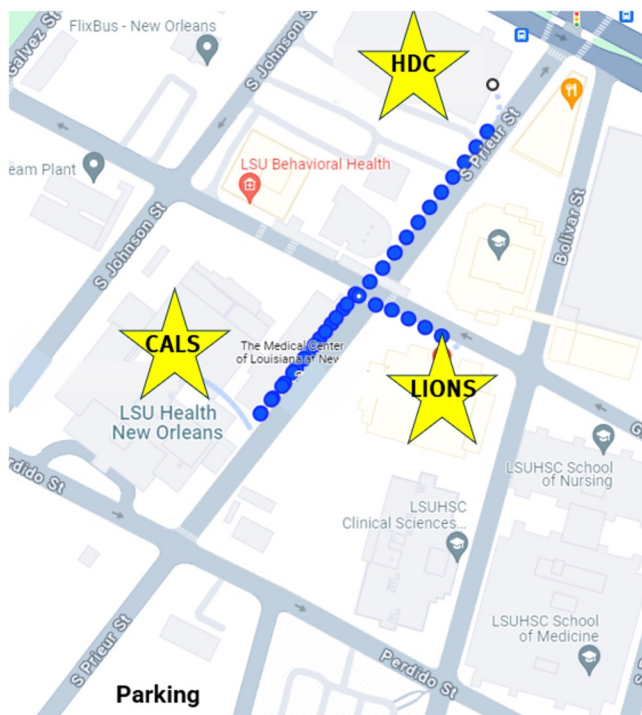
1—Connect to the LSUHSC-Visitor wireless network



2—Open a web browser and you will be redirected to the visitor login page



TOUR LOCATIONS



CALS—Nursing Tour

Entrance: 519 S. Prieur St

LIONS—Medicine Tour

2020 Gravier

SIMULATION MEDICAL TRAINING & EDUCATION COUNCIL OF LOUISIANA COMMITTEE MEMBERS

Susannah Craig - Board of Regents

Nicole Coarsey - Louisiana Department of Health

Kellie Taylor-White - Louisiana Workforce Investment Council

Elizabeth Duncan - Louisiana Department of Education

Chair, Daryl Lofaso - LSUHSC - New Orleans: School of Medicine

Ann Warner - McNeese State University, College of Nursing

Trudy Williams - Southern University and A&M College

Alison Davis - LSUHSC-New Orleans: School of Nursing

Wendi Palermo - Louisiana Community & Technical College System

Tabitha Jones-Thomas - Franciscan Missionaries of Our Lady University (FRANU)

Ashley Orphe - Southwest Louisiana Area Health Education Center

Aimee Cloyd - Louisiana Hospital Association

Wes Hataway - Louisiana Nursing Home Association

Evon Smith - ACE 4 EMS

Vincent Culotta - Louisiana State Board of Medical Examiners

Karen Lyon - Louisiana State Board of Nursing

Lynn Ansardi - Louisiana Board of State Practical Nurse Examiners

Dustin Miller - Louisiana House of Representatives

Beth Mizell - Louisiana State Senate

Rosa Walton - Office of Elderly Affairs

Claire Stevenson - Office of the Governor

Jennifer Calzada - Tulane School of Medicine

Lisa Broussard - University of Louisiana at Lafayette

2024 SIMULATION EXPO PLANNING COMMITTEE

Daryl Lofaso, PhD, Med, RRT, CHSE

Ann Warner, PhD, RN, CNE

Trudy Williams, PhD, RN

Frances Stueben DNP, RN, CHSE

Alicia Tate, NRP



LSU Health
NEW ORLEANS

School of Medicine

Learning Center Website:

https://www.medschool.lsuhschool.edu/medical_education/learningcenter

Simulation Expo 2024 Website:

https://www.medschool.lsuhschool.edu/medical_education/learningcenter/sim_expo_2024.aspx